

This map was prepared for assessment purposes

SE1/4 SW1/4 SEC 34 T2N R32E WM UMATILLA COUNTY

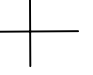
9/13/06

2N 32 34CD

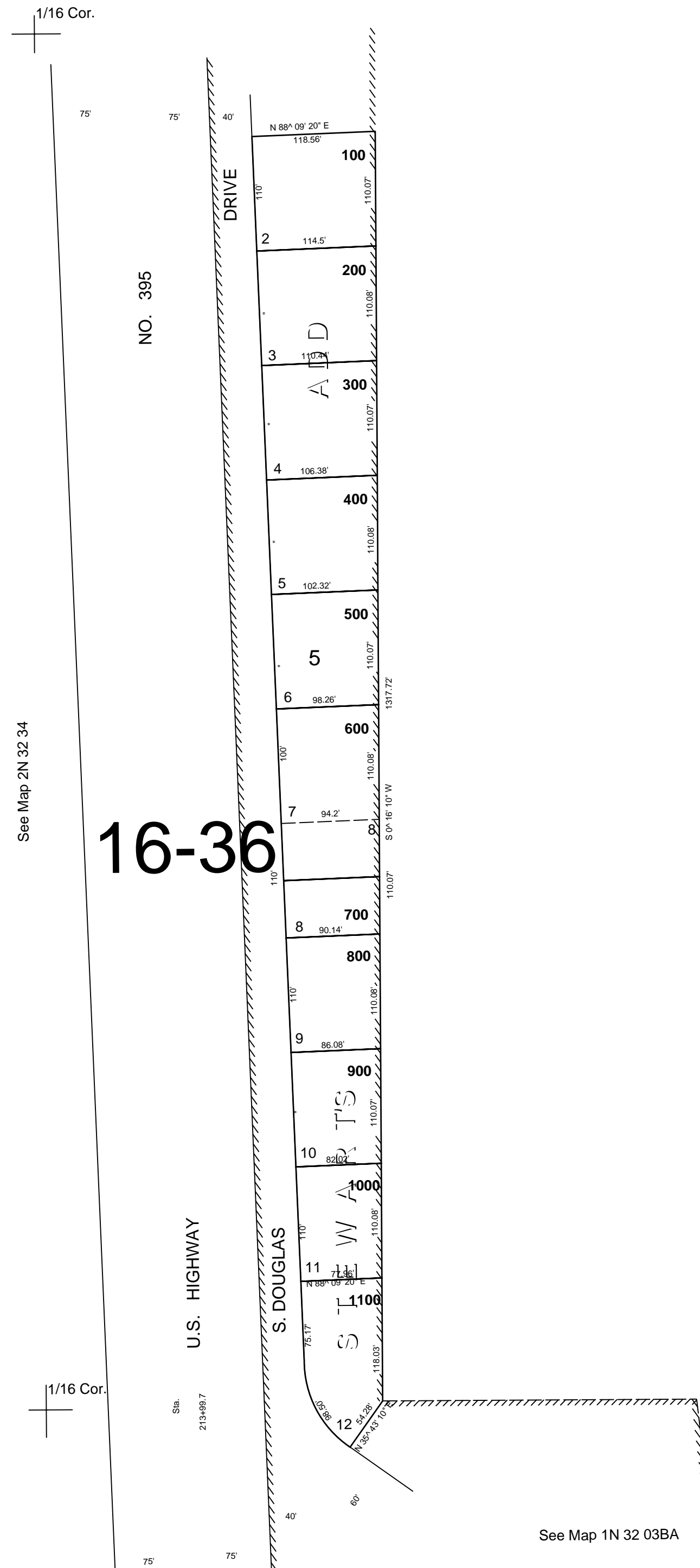
AERIAL PHOTO NO. 4P-49 & 50

SCALE 1"=100'

See Map 2N 32 34CA

1/16 Cor. 

CANCELLED
TL 701



2N 32 34CD