

This map was prepared for Assessment & Taxation purposes only and was NOT prepared nor is it suitable for legal, engineering or surveying purposes.

NE1/4 NW1/4 SEC 34 T2N R32E WM

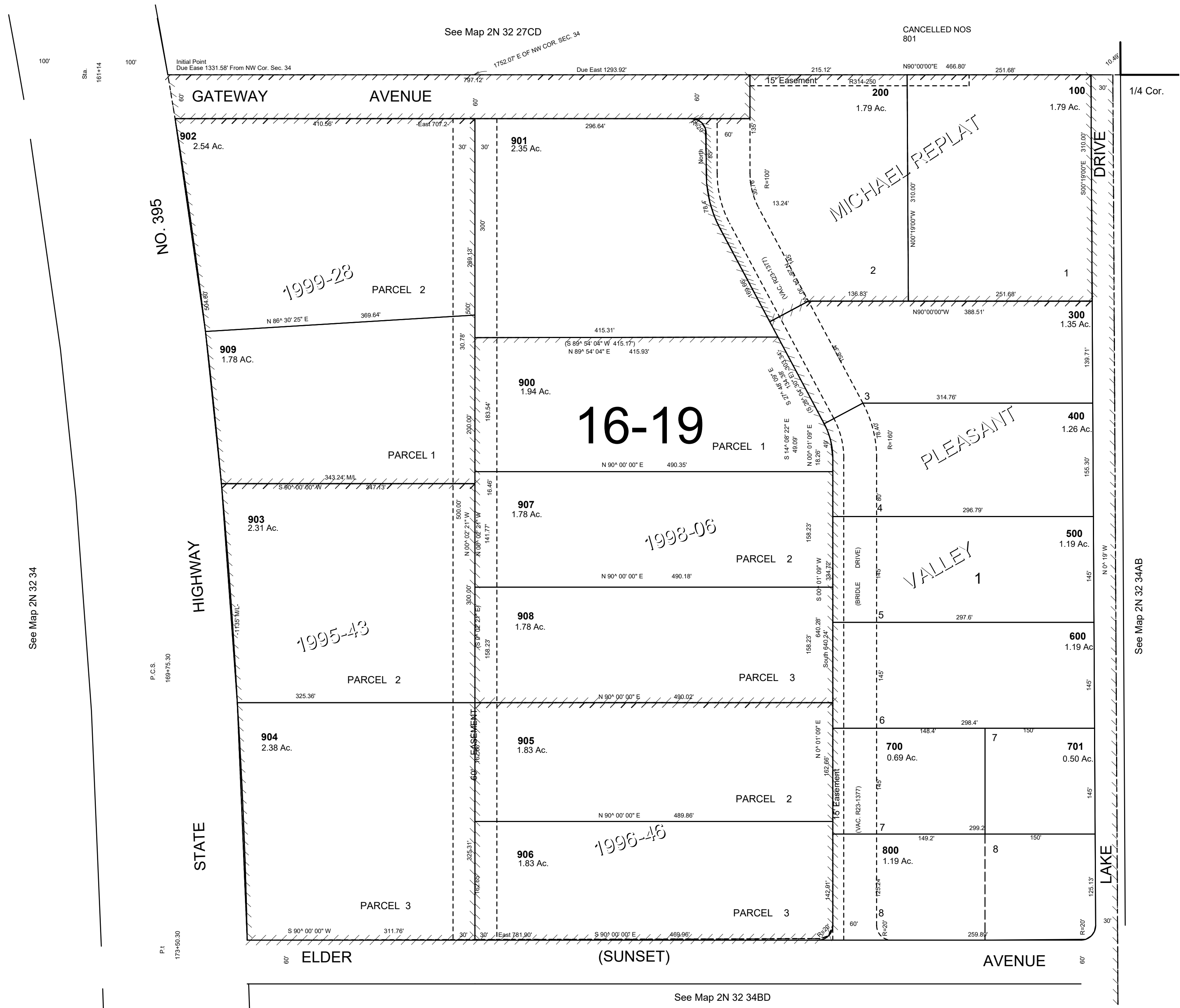
11/21/05

2N 32 34BA

UMATILLA COUNTY

1"=100'

AERIAL PHOTO NO. 4P 49 & 50



2N 32 34BA