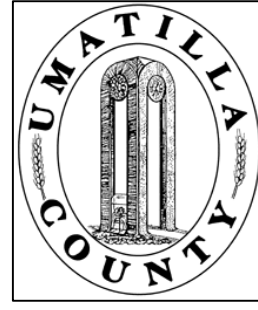


This map was prepared for Assessment & Taxation purposes only and was not prepared nor is it suitable for legal, engineering or surveying purposes.

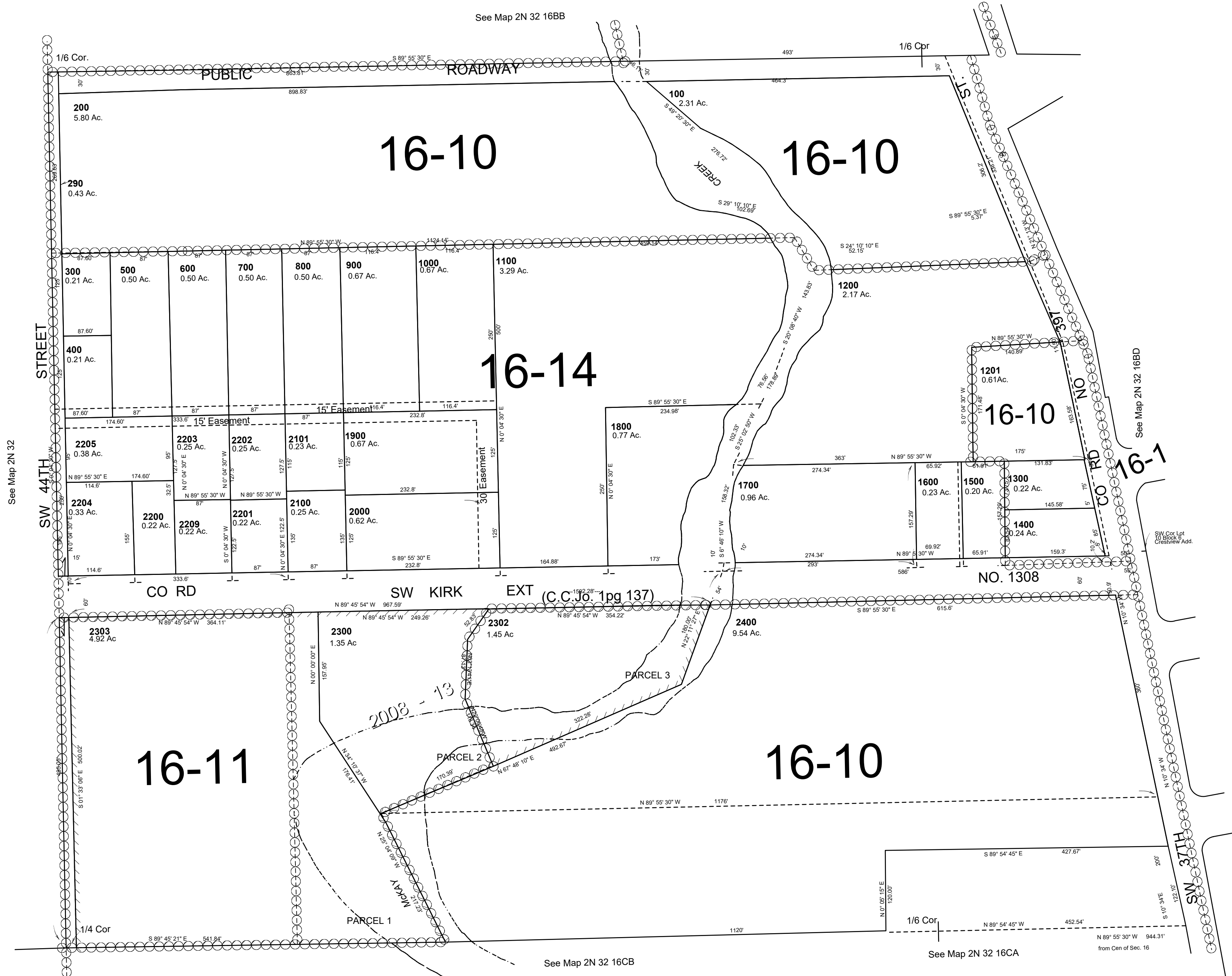


# SW1/4 NW1/4 SEC 16 T2N R32 WM UMATILLA COUNTY, OR

2N3216BC

Aerial Photo No. 4P-59

SCALE: 1" = 100'



REVISED: 03-18-19

2N3216BC