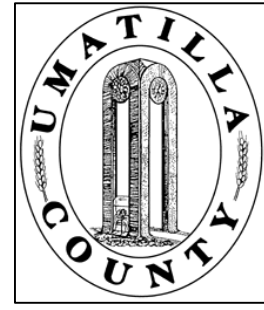


This map was prepared for Assessment & Taxation purposes only and was NOT prepared nor is it suitable for legal, engineering or surveying purposes.



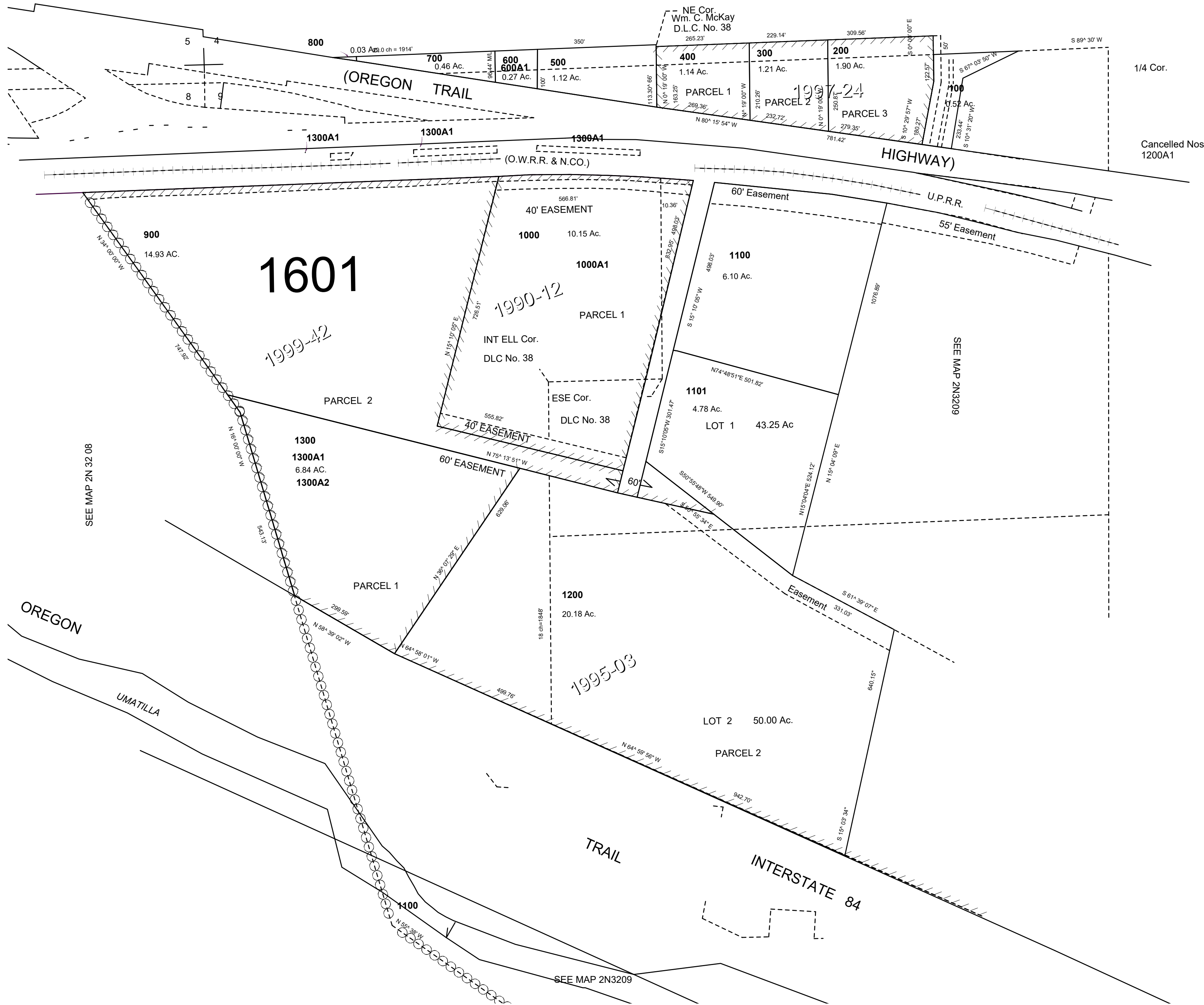
NW 1/4 SEC 09 T2N R32E WM UMATILLA COUNTY

2N3209B

AERIAL PHOTO NO NZ-4P-104

SCALE: 1" = 200

See Map 2N 32 04



Revised: 07-29-19

2N3209B