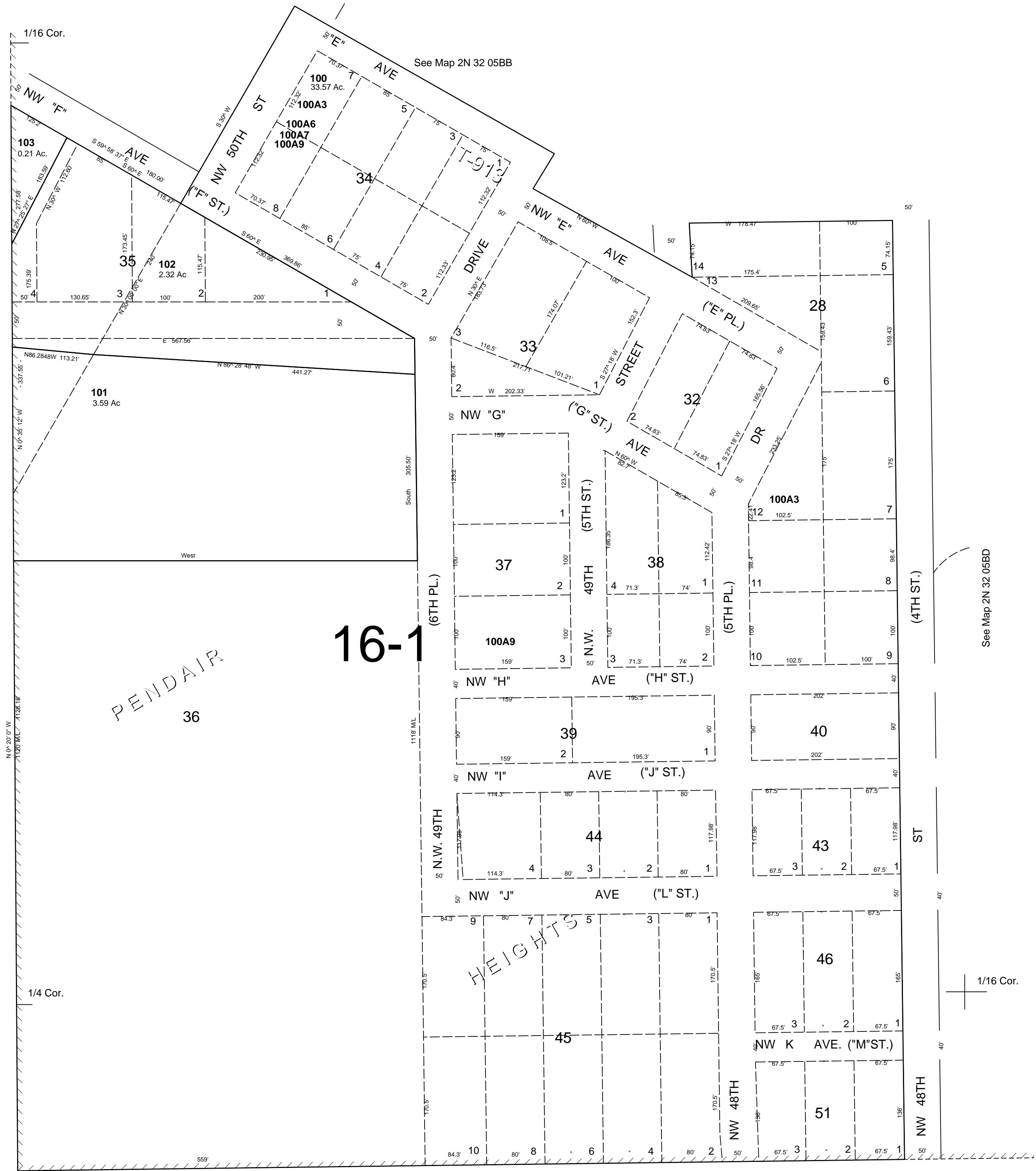


This map was prepared for Assessment & Taxation purposes only and was NOT prepared nor is it suitable for legal, engineering or surveying purposes.

SCALE: 1" = 100'

SW1/4 NW1/4 SEC 5 T2N R32E WM UMATILLA COUNTY

2N 32 05BC
AERIAL PHOTO NO. 4P-105



See Map 2N 32 05

2N 32 05BC