

UMATILLA COUNTY

NF 1/4 NW 1/4 T2N R32F WM

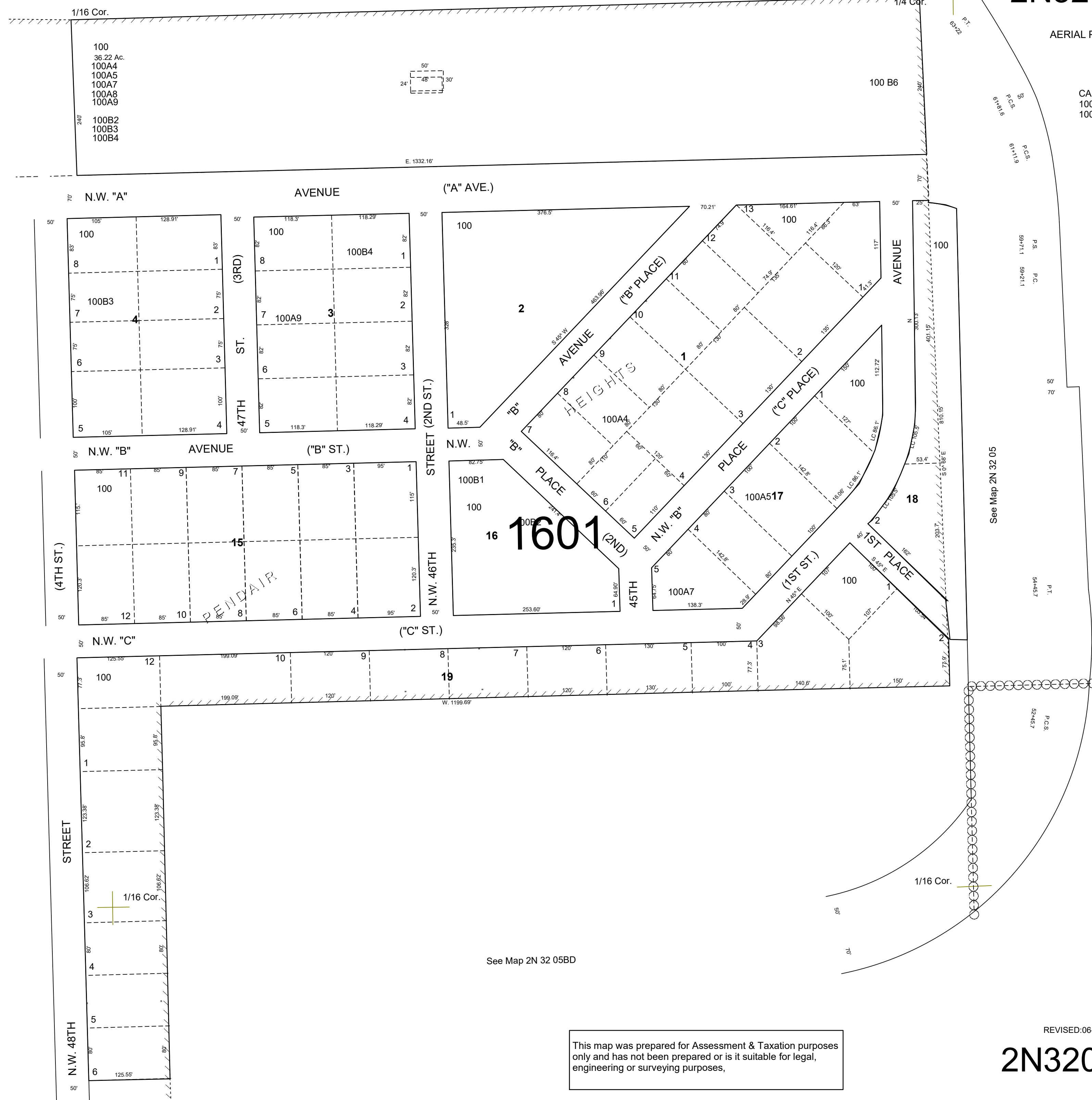
SCALE 1"=100'

See Map 3N 32 32

2N3205BA

AERIAL PHOTO NO NZ-4P-105

CANCELLED NC  
100A8  
100B1



See Map 2N 32 05BD

See Map 2N 32 05

This map was prepared for Assessment & Taxation purposes only and has not been prepared or is it suitable for legal, engineering or surveying purposes.

REVISED:06-16-2021

2N3205BA