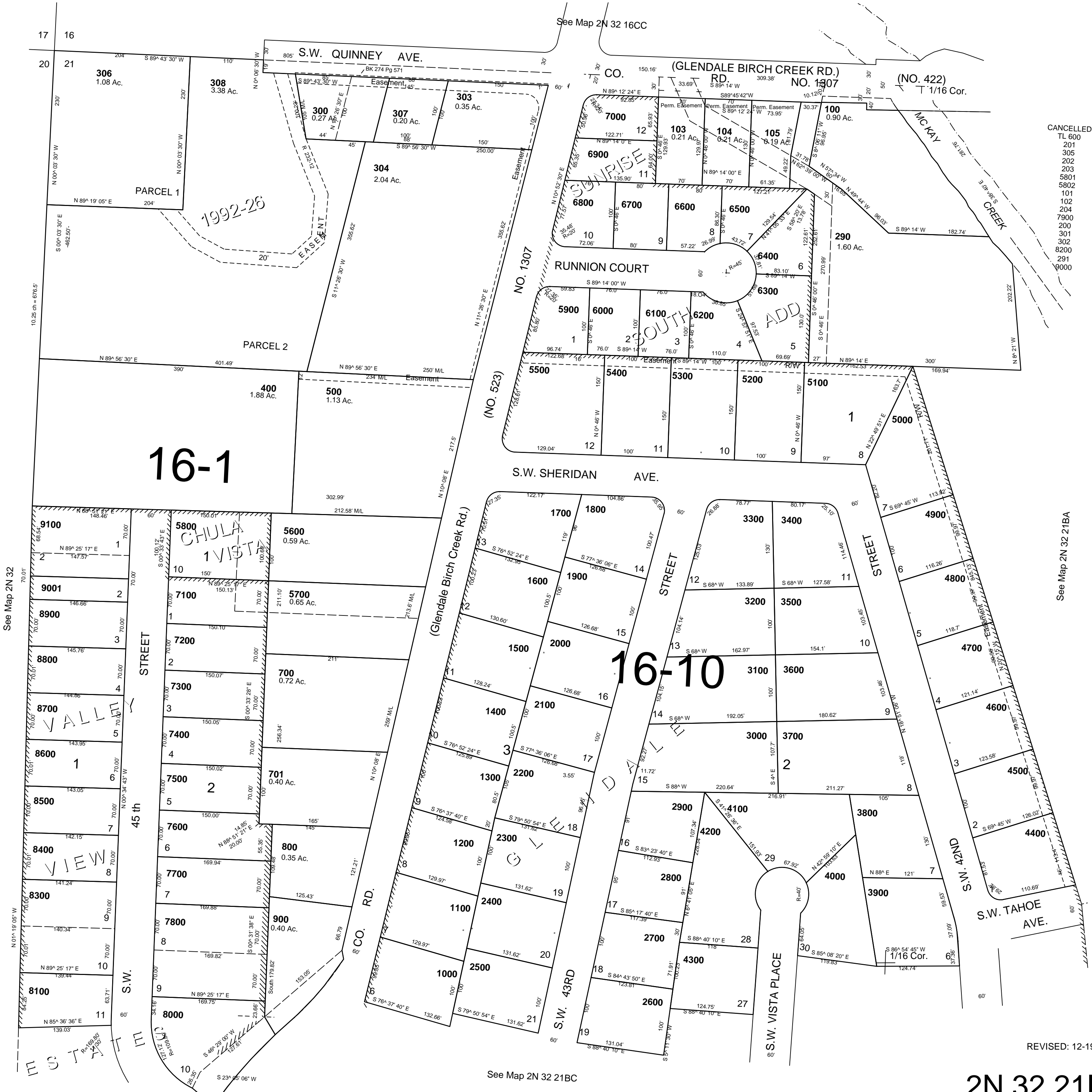


This map was prepared for Assessment & Taxation purposes only and was not prepared nor is it suitable for legal, engineering or surveying purposes.

NW1/4 SW1/4 T5NR28E WM UMATILLA COUNTY

2N 32 21BB
AERIAL PHOTO NO. 4P-59

SCALE 1"=100'



- CANCELLED
- TL 600
 - 201
 - 305
 - 202
 - 203
 - 5801
 - 5802
 - 101
 - 102
 - 204
 - 7900
 - 200
 - 301
 - 302
 - 8200
 - 291
 - 9000

See Map 2N 32 21BA

REVISED: 12-19-13

2N 32 21BB

See Map 2N 32 21BC

See Map 2N 32