

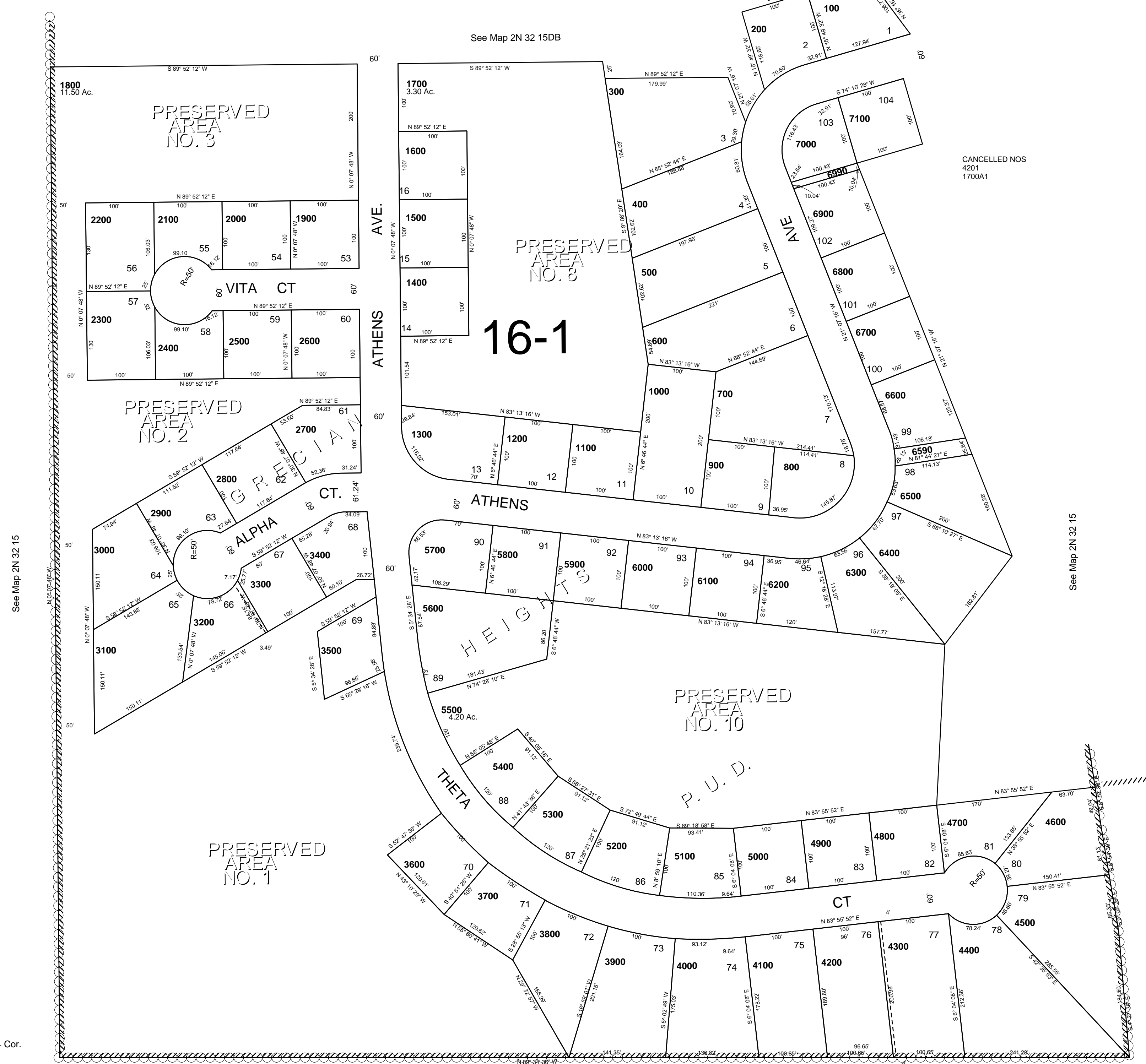
This map was prepared for Assessment & Taxation purposes only and was NOT prepared nor is it suitable for legal, engineering or surveying purposes.

# SW1/4 SE1/4 SEC 15 T 2N R 32E WM UMATILLA COUNTY

## 2N 32 15DC

AERIAL PHOTO NO. NZ-4P-59.

SCALE: 1" = 100'



CANCELLED NOS  
4201  
1700A1

See Map 2N 32 15

See Map 2N 32 15

Revised: 03/22/12

## 2N 32 15DC