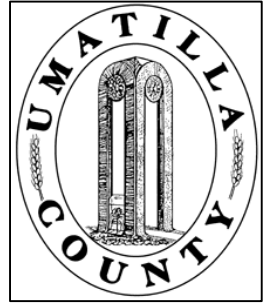


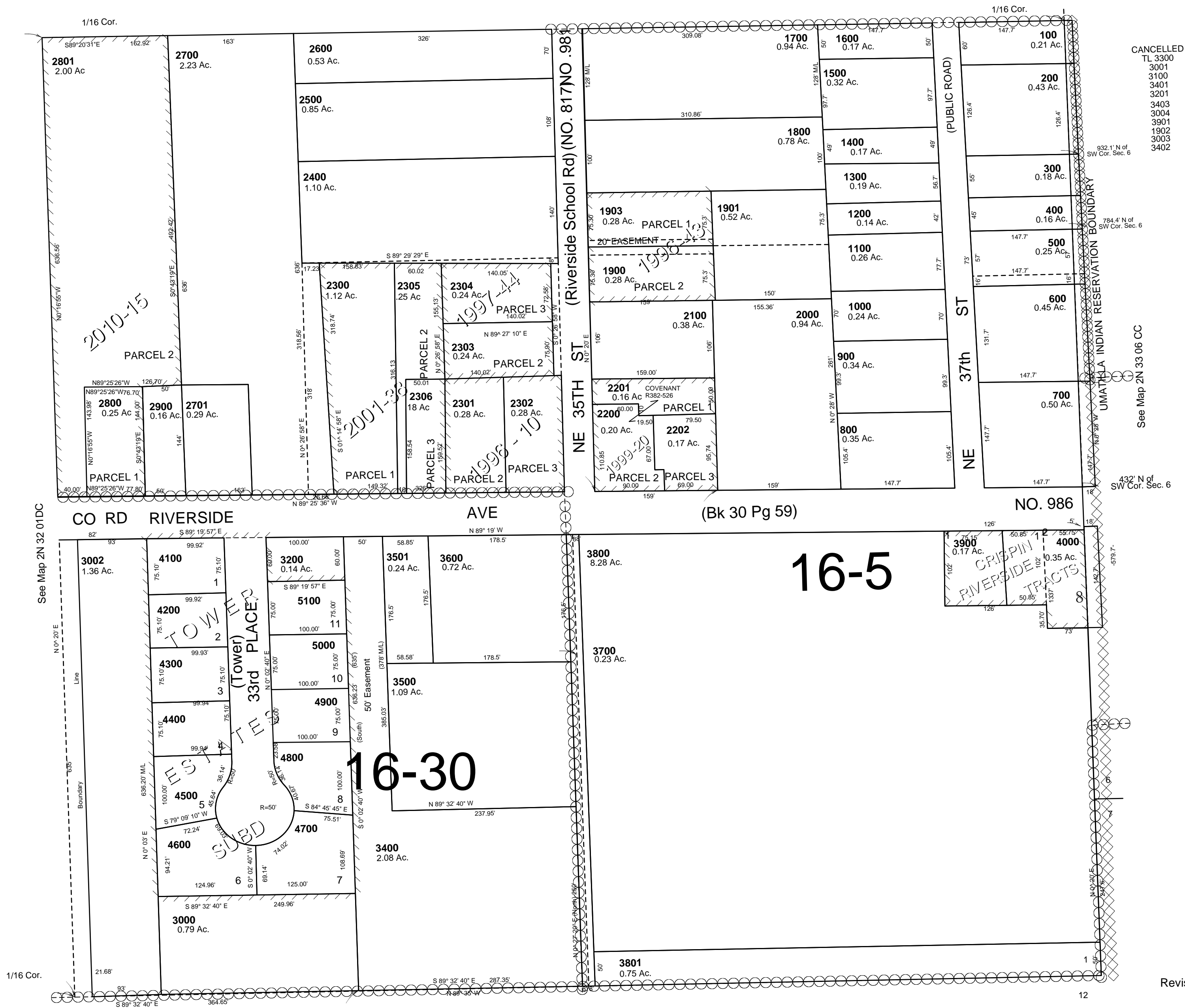
This map was prepared for Assessment & Taxation purposes only and was NOT prepared nor is it suitable for legal, engineering or surveying purposes.



SE1/4 SE1/4 SEC 1 T2N R32E WM
UMATILLA COUNTY
SCALE: 1" = 100'

2N3201DD

See Map 2N 32 01DA



CANCELLED
TL 3300
3301
3100
3401
3201
3400
3004
3901
1902
3002
3402

See Map 2N 33 06 CC

432' N of SW Cor. Sec. 6

Revised: 8/7/13

2N3201DD