

This map was prepared for Assessment & Taxation purposes only and was NOT prepared nor is it suitable for legal, engineering or surveying purposes.

T2N R31E WM UMATILLA COUNTY

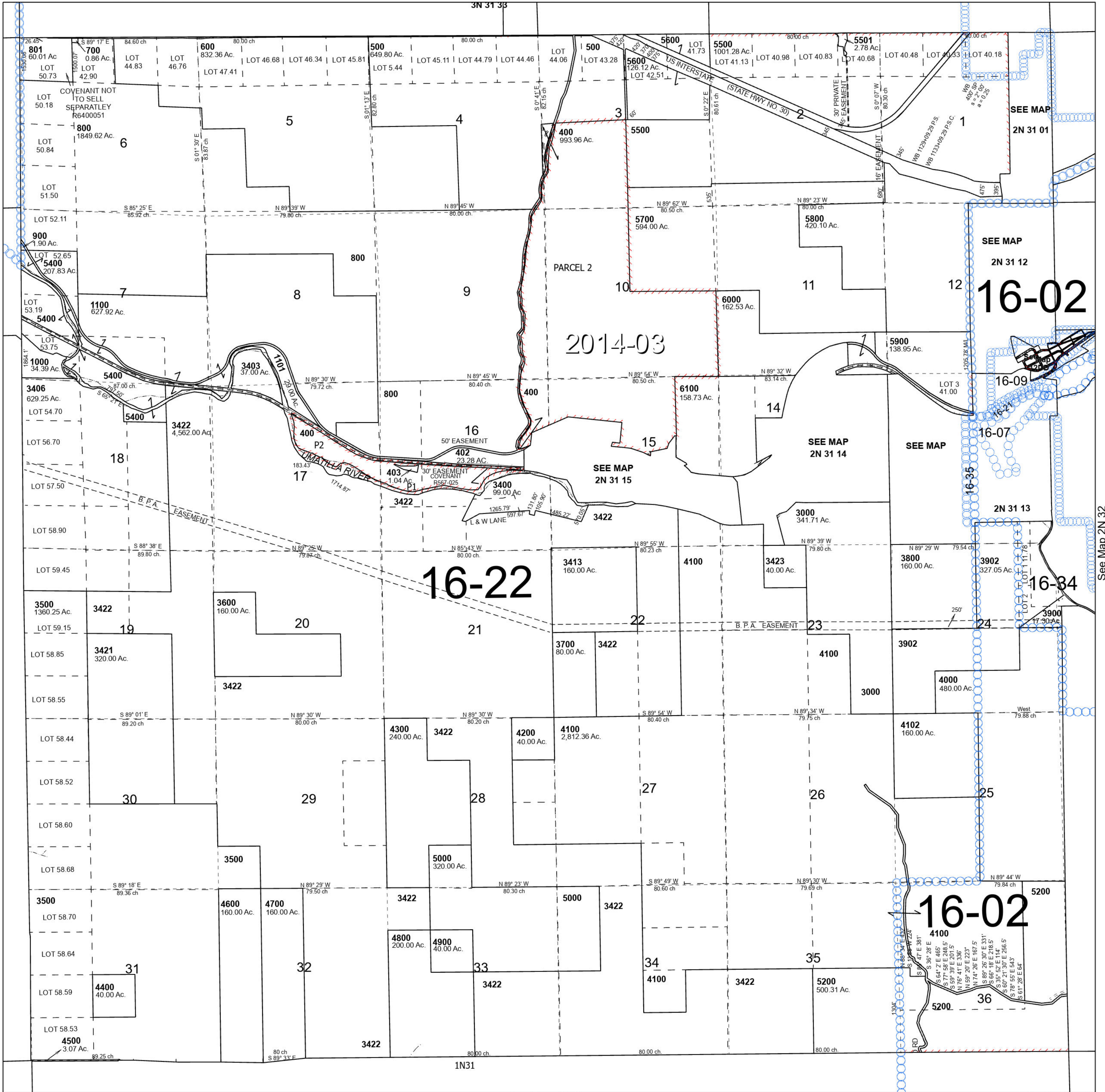
2N 31

SCALE 1" = 2,000'

Cancelled Tax Lots

100	501	1600	2401	3200-3202	4101
101	1200	1700	2500	3300	4103
190	1280	1800	2600	3401	4201
191	1290	1900	2700	3402	5100
200-203	1290	2000-2002	2800	3404	5101
290	1291	2100	2801	3405	5300
300	1300	2101	2890	3407-3412	5301
301	1390	2200	2900	3414-3420	
400	1400	2300	3001	3901	
401	1500	2400	3100	3903	

See Map 3N 31



See Map 2N 30

See Map 2N 32

Revised 9/29/2023

See Map 1N 31

2N 31