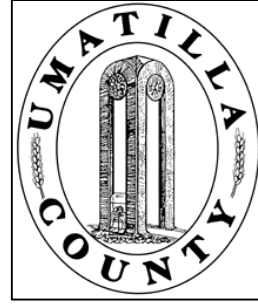


This map was prepared for Assessment & Taxation purposes only and was NOT prepared nor is it suitable for legal, engineering or surveying purposes.



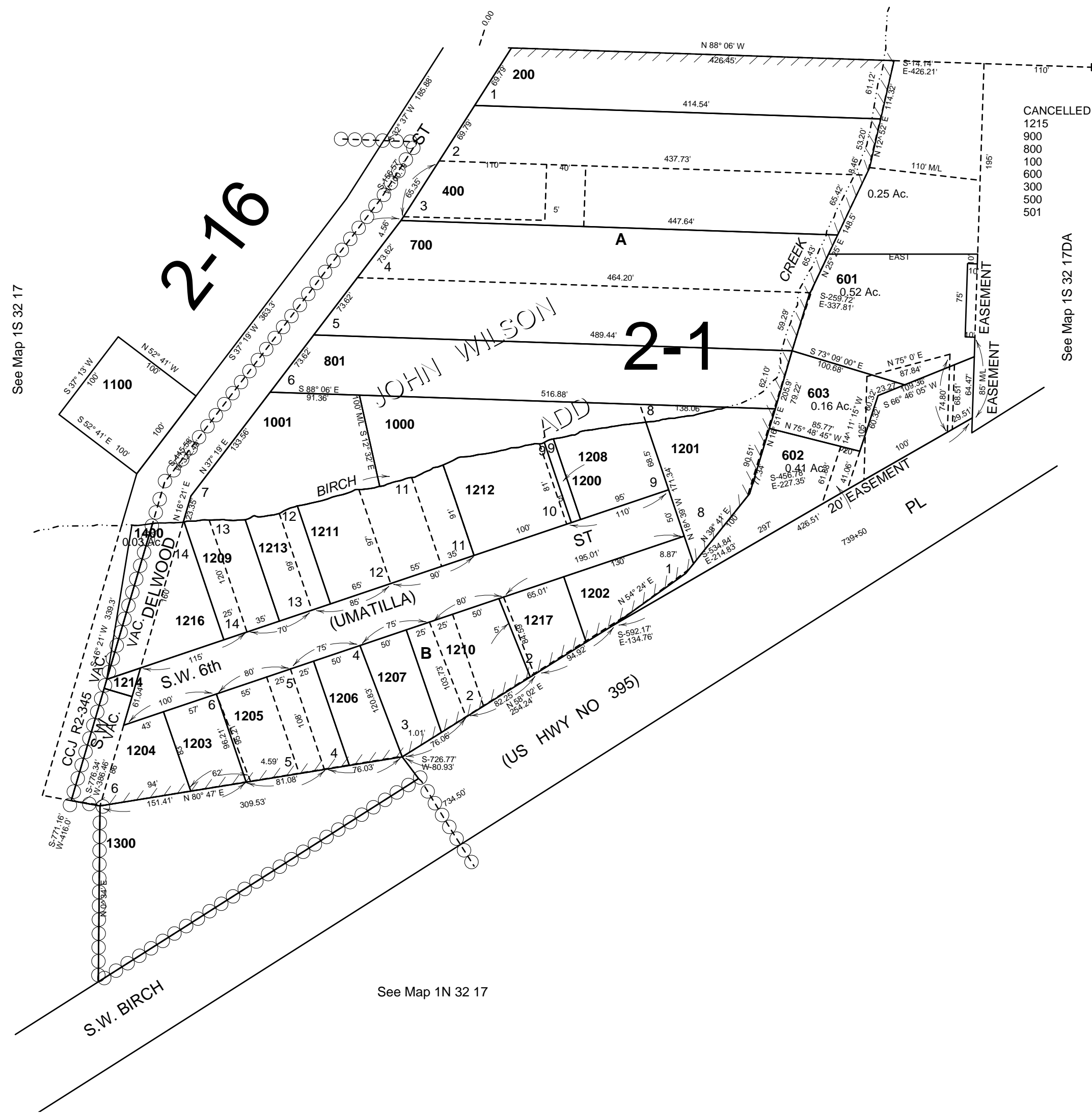
NW1/4 SE1/4 SEC 17 T1S R32E WM UMATILLA COUNTY

SCALE: 1" = 100'

1S 32 17DB

AERIAL PHOTO NO. 7P-69

See Map 1N 32 17AD



See Map 1S 32 17

See Map 1S 32 17DA

See Map 1N 32 17

Revised: 6/13/11

1S 32 17DB