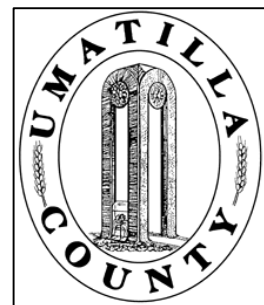


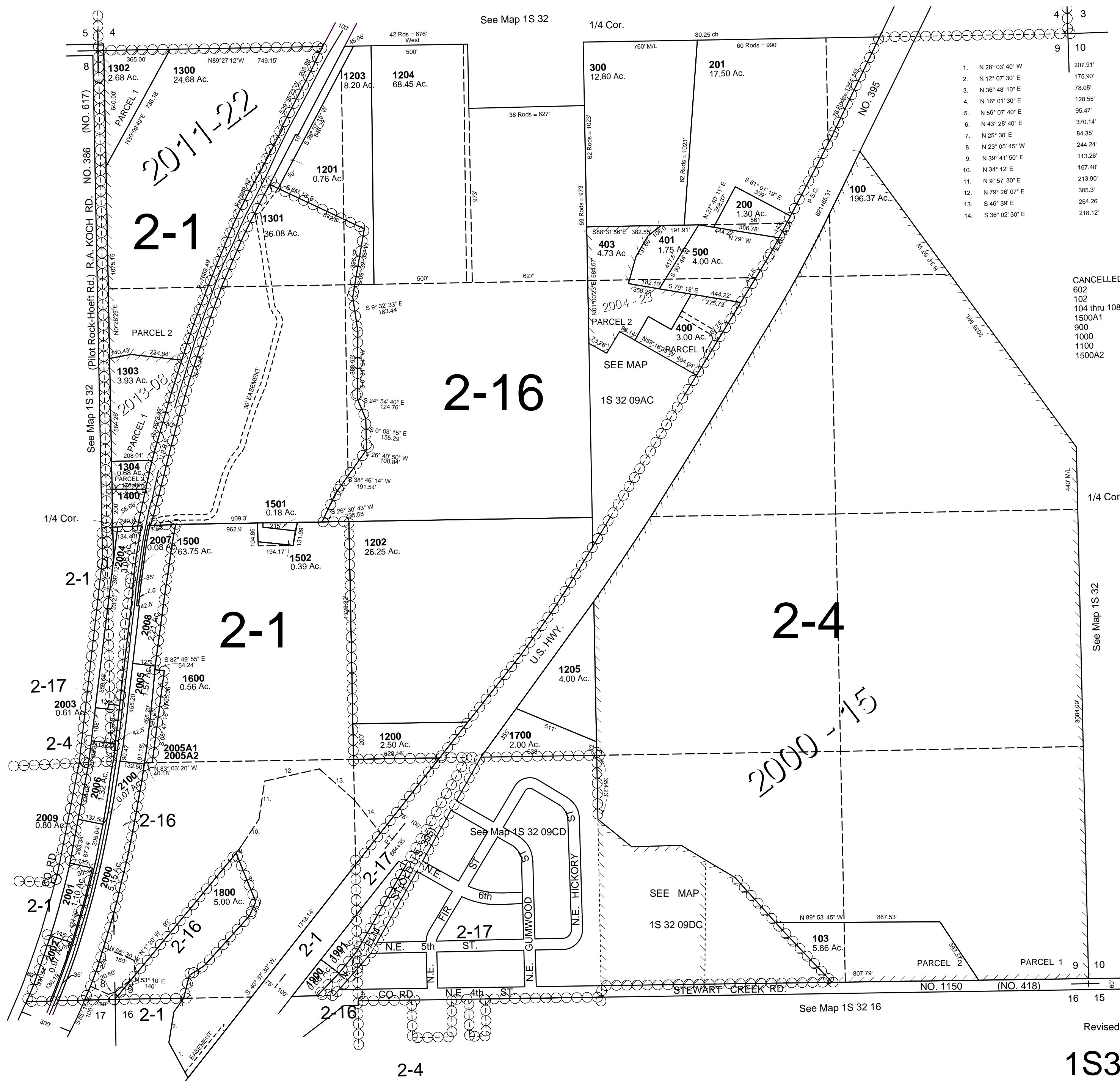
This map was prepared for Assessment & Taxation purposes only and was NOT prepared nor is it suitable for legal, engineering or surveying purposes.



SEC 9 T1S R32E WM
UMATILLA COUNTY
SCALE 1" = 400'

1S3209

AERIAL PHOTO NO. NZ-7P-27



CANCELLED
602
102
104 thru 108
1500A1
900
1000
1100
1500A2

Revised: 6/04/13

1S3209