

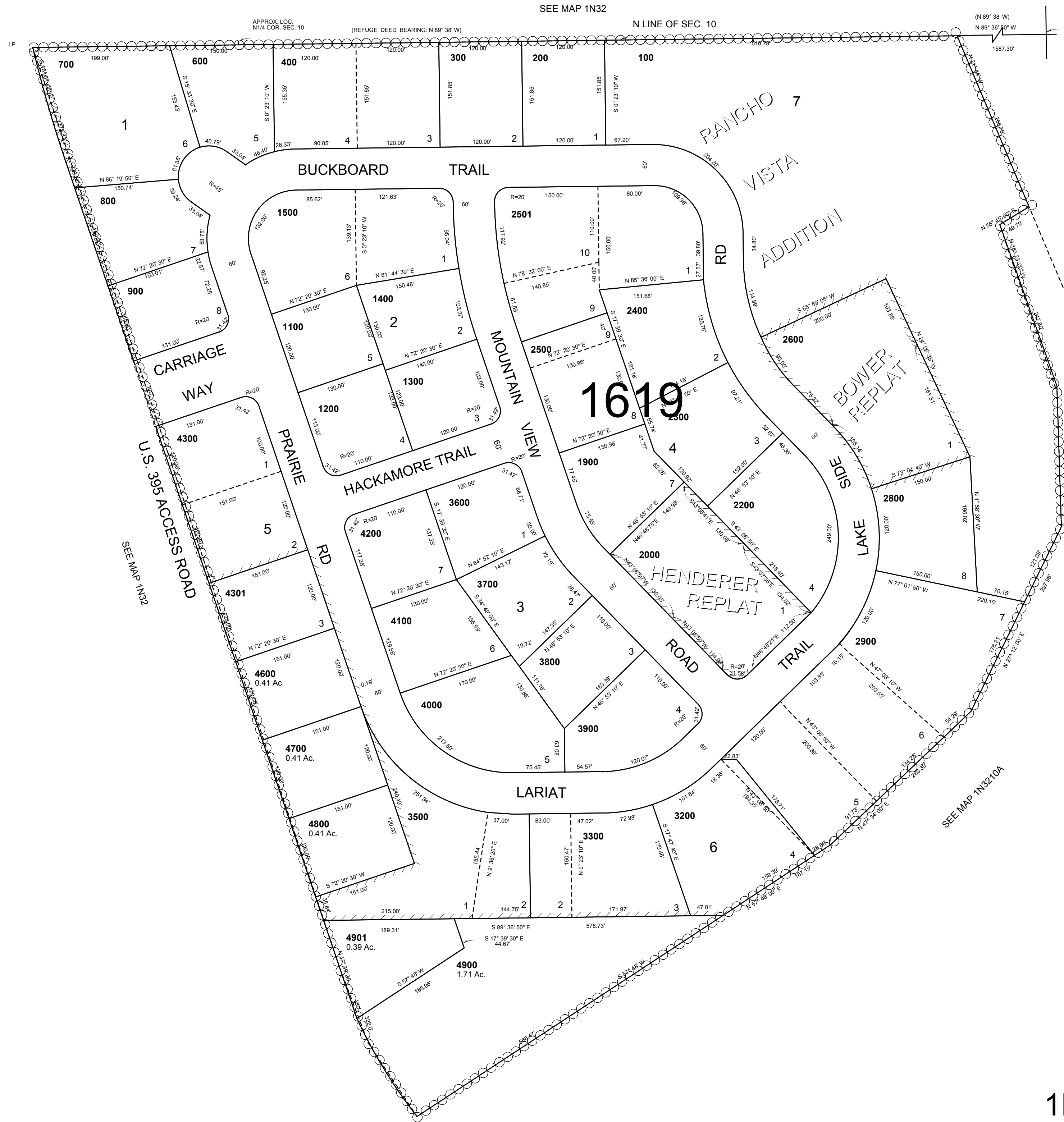
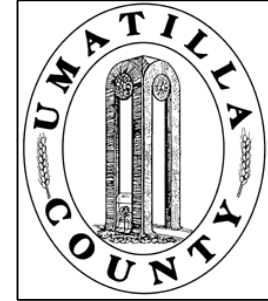
This map was prepared for Assessment & Taxation purposes only and was NOT prepared nor is it suitable for legal, engineering or surveying purposes.

NW1/4 NE1/4 SEC 10 T1N R32E WM UMATILLA COUNTY

1N 32 10AB
AERIAL PHOTO NO 4P-6

SCALE: 1" = 100

SEE MAP 1N32



N.E. COR.
SEC. 10

- CANCELLED NOS
- 500
 - 1000
 - 1600 thru 1800
 - 3000
 - 3100
 - 3400
 - 4400
 - 4500
 - 2100
 - 2700

Revised: 10-25-17

1N 32 10AB